

321 MacDonough St

4 Family Brownstone

\$1,895,000



Lot Size:	20'x 100'
Bldg. Sq. Ft.:	3,600
Year Built:	1910
Yearly Tax:	\$7,586
Cross St:	Stuyvesant Ave
School District:	16



Welcome to 321 Mac Donough St, a charming 4-story, 4-family brownstone nestled in the heart of the Stuyvesant Heights Historic District. This historic gem is brimming with potential, offering a full cellar and original details that await restoration and TLC to bring out its true splendor. The garden level, features a welcoming 3-room, 1-bedroom, 1-bath layout, with direct access to the expansive garden, perfect for outdoor enjoyment and entertaining. The parlor level boasts high ceilings and presents a 3-room, 1-bedroom, 1-bath configuration, showcasing original wainscoting, moldings, and mantles that exude character and charm. The third and fourth levels feature a spacious 4-room, 2-bedroom, 1-bath layout, providing ample living space for residents. The residence retains its original details throughout, offering a glimpse into the brownstone's rich history, ensuring a unique and authentic living experience.

Conveniently situated with easy access to the Utica Ave/Fulton St AC train lines, this brownstone is strategically located for seamless commuting and exploring the vibrant surrounding neighborhood. With market-rate rents in mind, this property presents an excellent opportunity for both owner-users and savvy investors alike, promising a blend of historic elegance and modern functionality in a coveted historic setting. Don't miss the chance to make this property your own and breathe new life into this timeless piece of Stuyvesant Heights history.

Place your camera over the QR code

LISTING AGENT

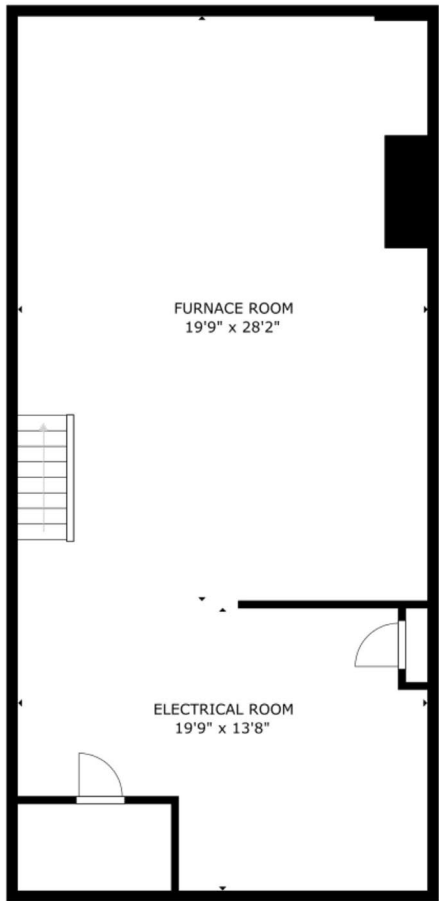
Gamal Hasan

T: 718.768.4500 / M: 917.204.7315

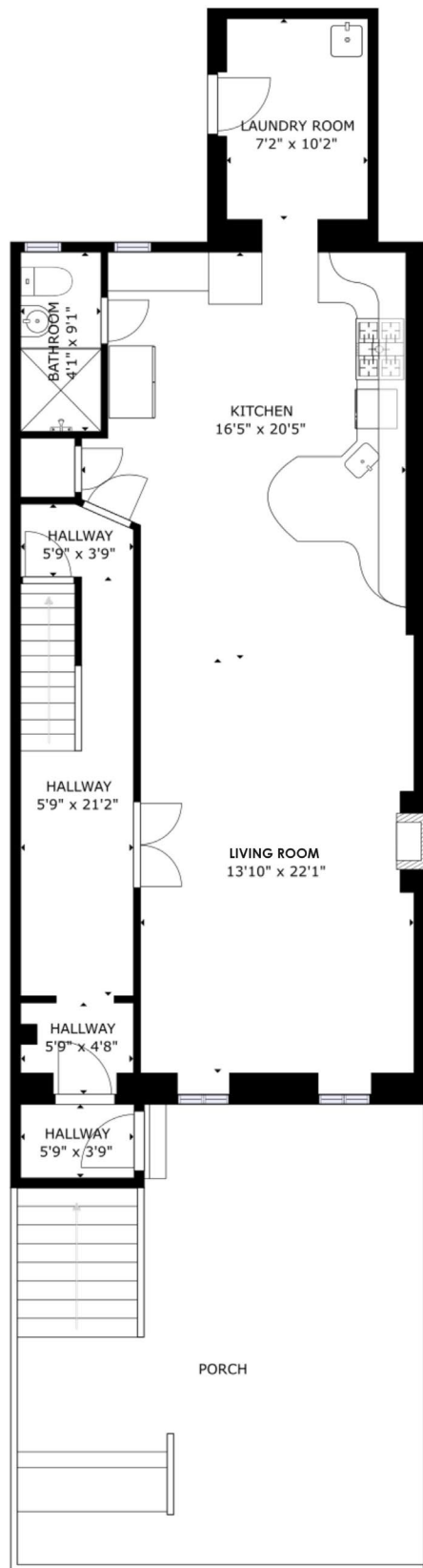
gh@BrooklynProperty.com

www.BrooklynProperty.com

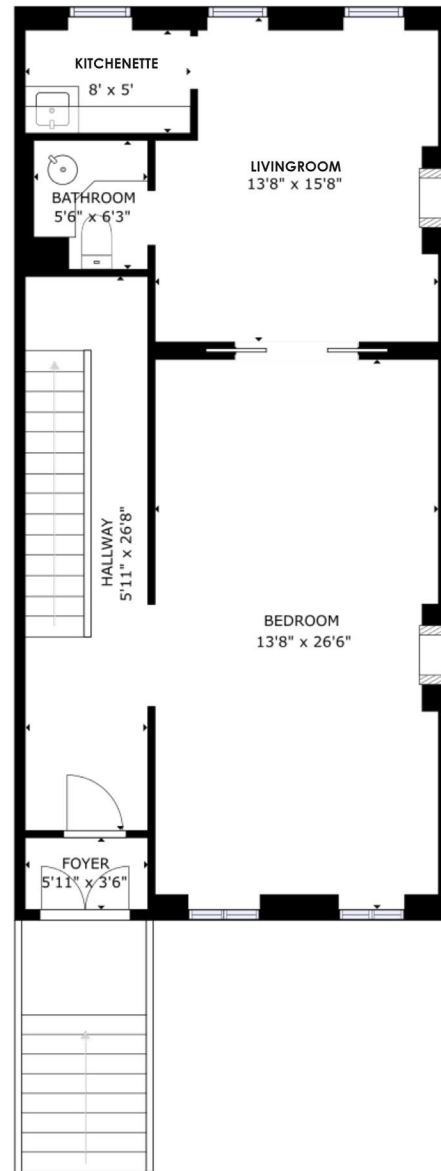
Bellmarc RESIDENTIAL



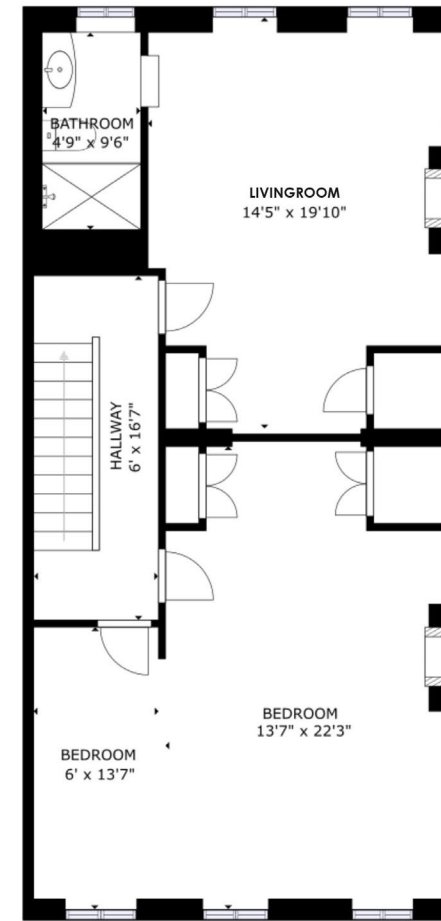
BASEMENT



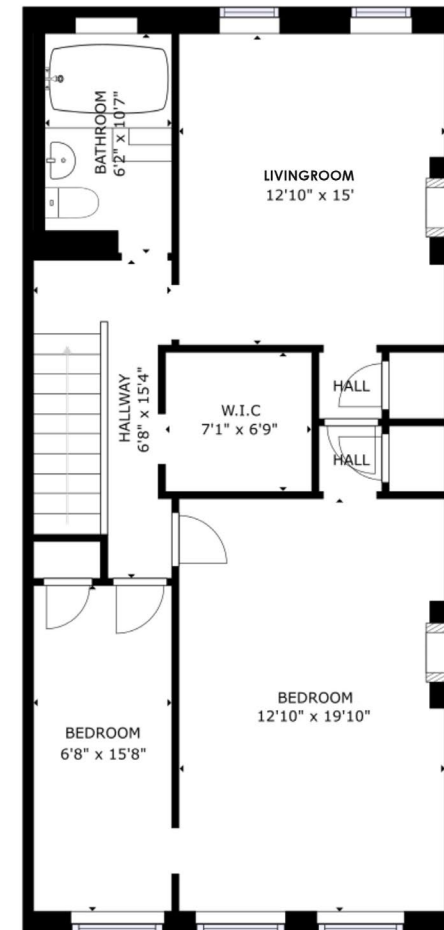
FLOOR 1



FLOOR 2



FLOOR 3



FLOOR 4

GROSS INTERNAL AREA
 BASEMENT : 831 sq ft, FLOOR 1: 958 sq ft, FLOOR 2: 854 sq ft, FLOOR 3: 854 sq ft, FLOOR 4: 863 sq ft
 EXCLUDED AREAS: PORCH: 438 sq ft
 TOTAL: 4360 sq ft
 SIZES AND DIMENSIONS ARE APPROXIMATE, ACTUAL MAY VARY.